

# Supporting municipalities in the clean energy transition



## The Province of Antwerp

The Province of Antwerp is a regional authority in the Flemish region in Belgium with almost 2 million inhabitants. Policy domains the province of Antwerp is active in are climate, environment, biodiversity, water management, agriculture, economic development, labour market, mobility, spatial planning, heritage, tourism, leisure and education. One of the main tasks of the province of Antwerp is developing support for its **69 local municipalities** of which 68 signed the Covenant of Mayors.

The province of Antwerp has experience in EU programmes Horizon2020, Horizon Europe, LIFE, LIFE CET, Erasmus+, COSME, Interreg Flanders-Netherlands, Interreg 2 Seas, Interreg North Sea, Interreg North West and Interreg Europe.

## Approach

The province of Antwerp supports its local authorities with the clean energy transition. To reach this, several departments develop tools and support:

- The climate team develops **SECAP's** with a tailor-made analysis of the emissions per sector (mitigation), a risk and vulnerability analysis (adaptation) and an action plan for the municipalities' territory. Via the extensive online database of 'Provinces in numbers' municipalities can download readymade reports that give them insight into the state of energy, climate and adaptation for their territory. Next, we also provide support and trainings for municipalities, schools and business sector on mitigation and adaptation measures.
- The department of spatial planning develops **energy landscapes**. Energy landscapes are geographical areas (beyond the borders of single municipalities) with similar spatial, socio-economic and energetic challenges where cooperation accelerates the energy transition. The instrument indicates zones for each type of renewable energy (wind, solar, geothermal, waste heat) and which stakeholders to involve when implementing the energy measures. The combination of local customisation and regional coordination makes the energy strategy more feasible and affordable.
- The energy team of the department of economic development develops **heat plans**. In a heat plan a geographical area is divided in zones with potential for district heating networks and other zones where individual sustainable heating solutions are necessary. This can be for a single municipality or cross border. The energy team gives trainings for local municipalities and forms the bridge between municipalities and energy consultants.

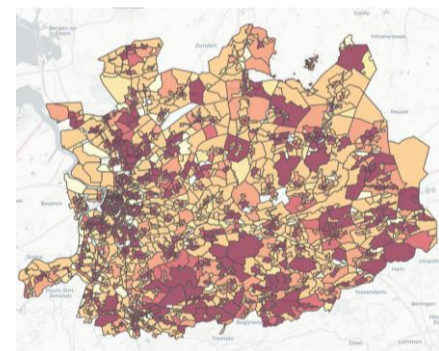
### SECAP



### Energy Landscapes



### Heat Plans



## LIFE CET

**LIFE-2023-CET-LOCAL** Technical support to clean energy transition plans and strategies in municipalities and regions.

## Partners looked for

- Project coordinator
- Regional authorities
- Energy agencies
- Research institutes
- Communication & dissemination
- .....